

# Savile Park Primary School

## June 2024 Newsletter

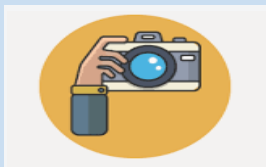


We are on the web: [savileparkprimary.org.uk](http://savileparkprimary.org.uk)  
Facebook: Savile Park Primary School - Moorfield and Heath.  
Please check out our photos!



We are rapidly approaching the end of term and we still have so many exciting events to fit in. Unfortunately, as you are already aware, we have needed to cancel our Summer Fayre, this has provided the opportunity for school to try and relaunch a parents/carers fundraising committee. Thank you to those who have already expressed an interest in joining. If you would like to help school with this, particularly in the time when our school budget is extremely limited then please email Mr Laycock, the School Business Manager- [rob.laycock@savilepark/calderdale.sch.uk](mailto:rob.laycock@savilepark/calderdale.sch.uk) Many thanks for everyone's understanding and support.

### Class Photographs



The photographer was in school on 5 June, taking class photographs. Despite the unpredictable weather, we did manage to successfully take every classes photograph outside. You should now have the proof to look at and have decided if you want to purchase a copy.

### Year 6 Transition Workshop



On 5 June both year 6 classes attended a workshop, facilitated by Open Minds regarding transition. This aimed to support the children with any anxieties they might have relating to moving from primary to secondary school.

### Year 2 trip to Lytham St Anne's

The year 2 pupils had a fantastic start to their seaside topic with a trip to the beach! They visited Lytham and enjoyed building sandcastles and burying their feet in the sand! We were even lucky enough that it was high tide so we could paddle in the sea! We finished the day off with a delicious ice cream. All the children behaved brilliantly and we even had a little hint of some sunshine!



# Savile Park Primary School

We are on the web: [savileparkprimary.org.uk](http://savileparkprimary.org.uk)  
Facebook: Savile Park Primary School - Moorfield and Heath  
Please check out our photos



Savile Park's Summer Festival  
Thursday 18 July at 1:30 pm



All the Key Stage 2 children (from both sites) will be coming together to perform a spectacular musical event for you. This will be an afternoon filled with a range of exciting performances by the children, please join with us and keep everything crossed that the weather also decides to be spectacular.

## Transition

We are rapidly heading towards the end of term and naturally that means we are planning for transition. Our current year 6 children are leaving us to attend a number of different secondary schools. Internal transition will also be taking place. Children will be able to visit their new classroom and meet their new teachers during the week beginning 1 July 2024.

Before the end of term, we are delighted to be welcoming back Mrs Conway and Mrs Begum from their maternity leaves.

Miss Galloway will be returning from her maternity leave in December 2024. She will be joining Mrs Collins and teaching the Toucans class.

Mrs Dixon and Mr Kitchin will not have a class of their own next year, but they will still be teaching across school providing cover for the teachers.

### Moorfield Site

Reception Robins - Mrs Holmes

Year 1 Kingfishers - Miss Jones

Year 2 Pelicans - Mrs Foster and Mrs Hartley

Year 3 Parrots - Miss Hussain

Year 4 Kookaburras - Mr Hartrick and Mrs Conway

Year 5 Kestrels - Mr White

Year 6 Eagles - Miss Rae

### Heath Site

Reception Wrens - Miss Adams

Year 1 Hummingbirds - Miss Sykes

Year 2 Puffins - Mr Cole and Dr Ovenden

Year 3 Toucans - Mrs Collins and tbc

Year 4 Kiwis - Miss Makh

Year 5 Falcons - Miss Lucas

Year 6 Hawks - Mr Smith

# Savile Park Primary School

We are on the web: [savileparkprimary.org.uk](http://savileparkprimary.org.uk)  
Facebook: Savile Park Primary School - Moorfield and Heath  
Please check out our photos

## Reception visit to Hesketh Farm

On the 13 June, Robins and Wrens went to visit Hesketh Farm near Bolton Abbey. We had a fantastic day of activities which included: collecting eggs, taking a tractor ride, feeding the animals and holding the new born chicks. We had such a busy day that some of us had a nap on the coach on the way back!



## Polite Request



Can we politely ask parents/carers and children not to play with the reception equipment in the Heath playground before and after school.

Thank you for your understanding and co-operation.

## Staffing Changes

In September there will be some changes to our Senior Leadership Team. I am delighted to inform you that both Mrs Dixon and Mrs Collins have both been successful in securing promotion in school. Mrs Dixon will become Deputy Head Teacher and will work alongside Mr Kitchin, our existing Deputy Head Teacher. Mrs Collins has been successful in securing the role of Assistant Headteacher and SENCO.

## Outstanding Monies



We still have a number of outstanding payments from last half term for school dinners and clubs.

We would like to request that any arrears are brought up to date.

Could we remind you that payments should be made in advance, or at the latest by the end of each week.

Thank you for your support.



# Savile Park Primary School

We are on the web: [savileparkprimary.org.uk](http://savileparkprimary.org.uk)  
 Facebook: Savile Park Primary School - Moorfield and Heath  
 Please check out our photos

## Science Week

Week commencing the 17 June is Science Week in school and the theme this year is 'Time'. Time is an important concept across all STEM subjects (science, technology, engineering and maths). There are examples of time everywhere - it affects every part of our lives, which makes it such an interesting topic for this year's Science Week! During the week, children will be undertaking a range of exciting activities and will be celebrating all things science.



## Careers Workshop

Year 6 enjoyed a careers workshop where we explored our own aspirations and discussed a range of careers. We looked at some peculiar jobs like tea tasting so we now know anything is possible! We designed our own skills tree and thought about the things we enjoy, the skills we currently have and the skills we'd need in a range of careers. It was a thoroughly enjoyable event for both classes.



Thursday 27	Year 4 Whitby visit
-------------	---------------------



Monday 1	Rocksteady Performance (Heath)
Thursday 4	Rocksteady Performance (Moorfield)
Monday 8	Health week
Monday 8	Year 4 Kiwis and Kookaburras Bikeability both sites
Wednesday 10	Sports Day (EYFS & KS1 am and KS2 pm)
Wednesday 11	Re-arranged Sports Day if rained off on Wednesday
WB 15	Reports sent home to parents
Wednesday 17	Summer Term House Point Treat
Wednesday 17	Parents report drop-in sessions 3.15 pm- 4.15 pm
Thursday 18	Year 6 Leavers Celebration
Thursday 18	KS2 Summer Performance
Friday 19	Child of the Term Assemblies
Friday 19	School closes for Summer
Monday 22	Teacher training day

