

# Year 1 - Our School

## Key Vocabulary

map	A flat drawing of a place that includes some of its features.
aerial view	A photograph taken from above looking down.
past	Events that have already happened.
present	Events that are happening now.
directions	Instructions to get from one place to another.
route	A way to get from one place to another.
human features	Things that are made or built by humans.
physical features	Natural things on Earth.



## Schools in the past



## Schools in the present



## Human features

School, houses, village, park, shops.

## Physical features

Trees, weather, land, grass, hills, river, soil.

History - Learning about things that happened in the past.

Geography - Learning about our environment and where things are.

# Year 1 - Toys

Key Vocabulary	
past	Events that have already happened.
present	Events that are happening now.
material	What a toy is made from.
technology	Using knowledge to invent new devices.
difference	How things are not the same.
similarity	How things are the same.
compare	What is the same and different about two things.
old	Been around for a long time.
new	Not been around for a long time.

## Toys timeline



### Old toys

- Often made from wood
- Move by hand
- Simple to use
- Little to no colour

### New toys

- Often made from plastic
- Colourful
- Use batteries
- Have lights, sounds and movement

Toys are objects that we play with.

Toys can be anything from a simply piece of wood and string to computers and consoles.

Children from all points in time, way back in history and all around the world have made and played with all kinds of toys.

Toys have changed over time as new materials and technology have been introduced.

Some toys, such as dolls have been around for hundreds of year but the way they look and have been made have changed over time.

# Year 1 - Our Country

## Key Vocabulary

map	A drawing of an area shown from above.
country	An area of land with its own government, rules and borders.
UK	The United Kingdom. It is made up of the four countries; England, Scotland, Wales and Northern Ireland.
island	A piece of land that is surrounded by water.
capital city	A city where the country's government is located.
landmark	A feature of a place that is easily recognised.

**London** has landmarks including; Big Ben, the Tower of London, the river Thames, London Eye, Buckingham Palace and the Houses of Parliament.

England has a **temperate climate**. Which means it is not extremely hot or extremely cold.

England has **seasonal weather**, with warm summers and cold winters.



The **UK** is made up of four countries: England, Scotland, Wales and Northern Ireland.

## Capital Cities

London ↔ England  
 Cardiff ↔ Wales  
 Edinburgh ↔ Scotland  
 Belfast ↔ Northern Ireland

**England** is the largest country in the UK. With many cities and towns. Most of which is flat with some rural countryside and hills in the north.

**Northern Ireland** is the smallest country in the UK. One landmark is Giant's Causeway.

**Scotland** is in the north of the UK. It has many islands. Scotland has many hills and mountains, including the largest in the UK Ben Nevis.

**Wales** is a country with many mountains. Wales also has its own language, welsh.



# Year 1 - Dinosaur Stomp

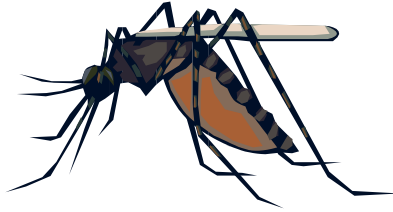
## Key Vocabulary

dinosaur	An extinct reptile that lived millions of years ago.
fossil	Remains of animals that lived a long time ago.
palaeontologist	Someone who studies fossils.
extinct	A species that is no longer living.
artefact	Objects that give us information about the past.
fact	Something that is true.
fiction	Something that is made up.

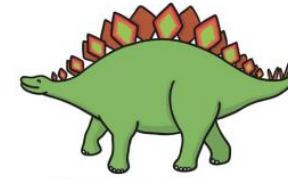


Mary Anning is a famous fossil hunter born in 1799. She hunted for fossils on the beach with her father.

We do not know how dinosaurs became extinct but some theories are: asteroid, volcano, extreme ice, disease.



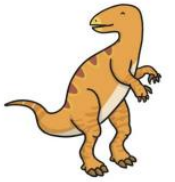
## Dinosaur Word Mat



Stegosaurus



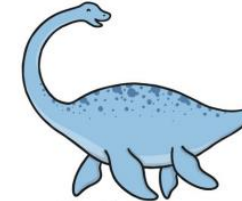
Triceratops



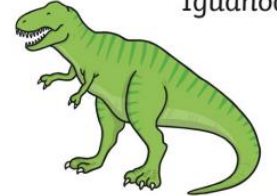
Iguanodon



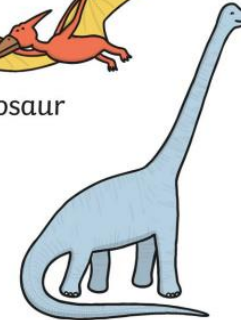
Pterosaur



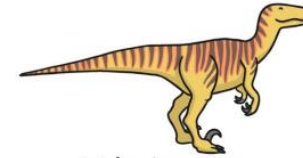
Plesiosaur



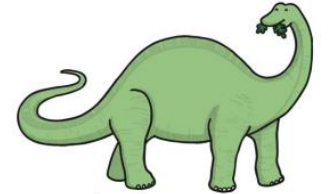
Tyrannosaurus rex



Brachiosaurus



Velociraptor



Apatosaurus



Fossil

Palaeontologist

# Year 1 - Kings & Queens

## Key Vocabulary

king	A male ruler.
queen	A female ruler.
monarch	A head of state with great power.
reign	How long a king or queen has ruled.

- He was a handsome clever king who liked expensive parties
- He is remembered because he was often seen as a bully because he killed anyone who didn't agree with him!
- He had 6 wives – Katharine Of Aragon, Anne Boleyn, Jane Seymour, Anne Of Cleves, Catherine Howard, Katharine Parr
- Henry wanted a son so he could take over his reign.
- He wanted to divorce his wife Catherine but he wasn't allowed because his religion didn't let him so he made his own!

Henry VIII (1509-1547)



There were many changes to life during Queen Victoria's reign

**Before** – houses had no water or electricity, they used candles and wells  
– **After** houses had water electric and gas

**Before** – only rich boys could go to school – **After** Victoria allowed everyone to go

**Before** – no factories for people to work in – **After** lots of factories for jobs  
**Before** – children worked in factories and many didn't go to school – **After** children weren't allowed to work and attended school instead

**Before** – trains were not used – **After** trains were used to transport goods

Victoria (1837 – 1901)



The longest reigning monarch!  
She became Queen Elizabeth II on 6th February 1952 when she was 25 years old. She married Prince Phillip and had 4 children!

In June 2022, Queen Elizabeth II celebrated her Platinum Jubilee. She had been Queen for 70 years! There were parties across the country and a special extended bank holiday weekend.

Elizabeth II (1952 – 2022)



The role of the monarch has always been the same - to lead the country, defend it and make decisions about the country. Each monarch has always has different rules and made different decisions meaning life hasn't always been the same at different times.



# Year 1 - Poles Apart

## Key Vocabulary

map	A flat drawing of a place that includes some of its features.
continent	A large area of land that includes all the islands with it.
equator	Imaginary line around the middle of the Earth, splitting into two parts.
climate	The weather conditions of an area.
compare	What is the same and different about two things.
weather	What the air and the sky are like outside.

England has a **temperate climate**. Which means it is not extremely hot or extremely cold.

## Continents and Oceans



## Continents

Africa  
Asia  
America (North/South)  
Europe  
Antarctica  
Australasia

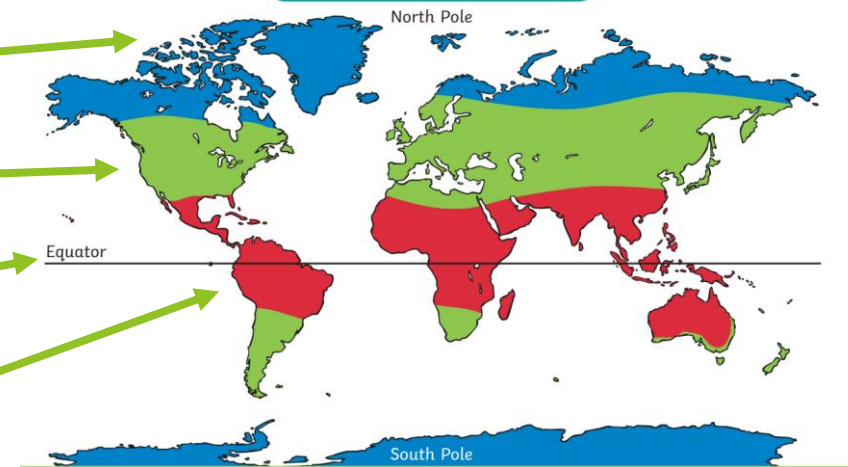
## World Climates Map

Cold

Warm

Equator

Hot

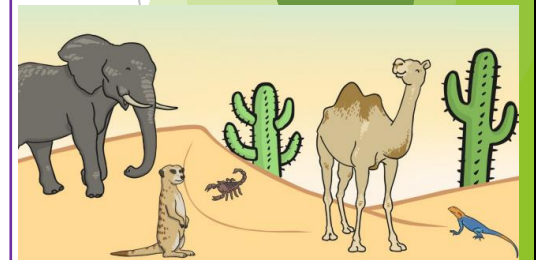


## Hot places

Desert, jungle, sun, heat

## Animals

Lion, tiger, meerkat, monkey, camel, scorpion, lizard, giraffe, hyena, rhino, elephant, cheetah, leopard, crocodile



## Cold places

Arctic, Antarctica, poles, polar, snow, ice

## Animals

Penguin, polar bear, Arctic fox, reindeer, snowy owl, seal, walrus, wolf, Arctic hare

